



PLPT TRIBAL NEWSPAPER

NUMUWAETU TELLING THE INDIAN PEOPLE'S NEWS NAWAHANA

Vol. 10, Issue 2

www.plpt.nsn.us

2016—3rd Quarter

Letter from Tribal Chairman Vinton Hawley

Over the last century the Tribe has engaged in on-going legal disputes with the Federal Government over waters rights to the Truckee River and Pyramid Lake. Beginning with the construction of Derby Dam in 1905, diversion of Truckee River water has caused major concern for the survival of Pyramid Lake. The lake level

payment. In order to maximize the use of the principal amount of the fund, the Tribe further believes that the continued management of the fund by the Federal Government is prudent.

The Tribal Council of the Pyramid Lake Paiute Tribe unanimously adopted Resolution PL41-16 which allows a distribution equal to 50% of the interest amount of the Pyramid Lake Paiute Economic Development fund. Each living enrolled member of the Tribe is eligible to receive



an equal economic stimulus payment from that distribution amount.

The Federal Government will issue the economic stimulus payments to each eligible, living enrolled member, listed on a certified payment roll, regardless of age. All new applications for Tribal enrollment must be submitted to the Tribal Enrollment Office by September 30, 2016, to be considered for inclusion in this distribution.

Tribal Members above the age of 22 at the time of distribution will be issued an economic stimulus payment in the form of lump sum check from the Federal Government. Tribal Members under the age of 22 at the time of distribution will have their economic stimulus payment placed in a minor's account to be managed by the Federal Government until the eligible Tribal Member reaches an age of 22 years old.

dropped eighty-seven feet from 1912 to 1967. Carrying its disputes to the Federal courts, the Pyramid Lake Paiute Tribe negotiated a landmark decision in 1990 when the U.S. Congress passed the Truckee-Carson-Pyramid Lake Water Rights Settlement Act, Public Law 101-618.

Public Law 101-618 Section 208(a)(3) authorized the appropriation of the Pyramid Lake Paiute Economic Development Fund in the amount of \$40,000,000. The fund was appropriated in 5 equal installments in 1993, 1994, 1995, 1996, and 1997. Since its initial \$40,000,000 appropriation the fund has gained interest in a Federal Government account. Today the interest amount is worth more than principal amount. The purpose of both the principal and interest amounts of the fund is to develop long-term, profit making opportunities for the Pyramid Lake Tribe and its members, to create optimum employment opportunities for Tribal Members and to establish a high quality recreation area at Pyramid Lake using the unique natural and cultural resources of the Pyramid Lake Indian Reservation.

The Tribe believes an effective use of the Pyramid Lake Paiute Economic Development Fund is a great way to maximize job creation and revenue for the Tribe is to put 50% of interest amount of the fund directly in the hands of the Tribal Members through an economic stimulus

Public outreach meetings will be held in three communities, currently scheduled for July 28th, in Nixon August 8th in Wadsworth, and August 11th in Sutcliffe. Notices have been posted with more details on each meeting. A draft of the ECONOMIC STIMULUS PAYMENT DISTRIBUTION PLAN for the PYRAMID LAKE PAIUTE ECONOMIC DEVELOPMENT FUND is open for public comment between July 18th and August 17th, 2016. Please submit public comment to Tribal Business Officer, Scott H. Carey at 208 Capitol Hill Drive PO Box 256 Nixon, NV 89424 or scarey@plpt.nsn.us.

**DO YOU HAVE QUESTIONS
ABOUT THE ECONOMIC
STIMULUS PAYMENTS?
Please call the information
hotline at 775-574-2444.**

Financial Corner

Financial literacy is the ability to understand how money works in the world: how someone manages to earn or make it, how that person manages the money they have, how he/she invests it (turn it into more) and how that person donates it to help others.

Financial literacy is a set of skills and knowledge that allows an individual or community to make informed and effective decisions with their financial resources. To make informed and effective decisions with your money, identify and set your personal or community goals.

What are your short-term goals (less than one year)? What are your mid-range goals (from one to five years)? What are your long-term goals? For each goal, outline how you intend to reach it, determine the cost, and how you plan to pay for it. Some goals may not require a financial cost, but a time commitment. Do your goals compete with other family member or community goals?

After setting your goals, work on managing your financial resources. A budget is a written plan for how to spend, save, and invest money. It is a tool to help you keep track of how much you earn and how much you spend. You can also use it to figure out how much you can afford to save and invest.

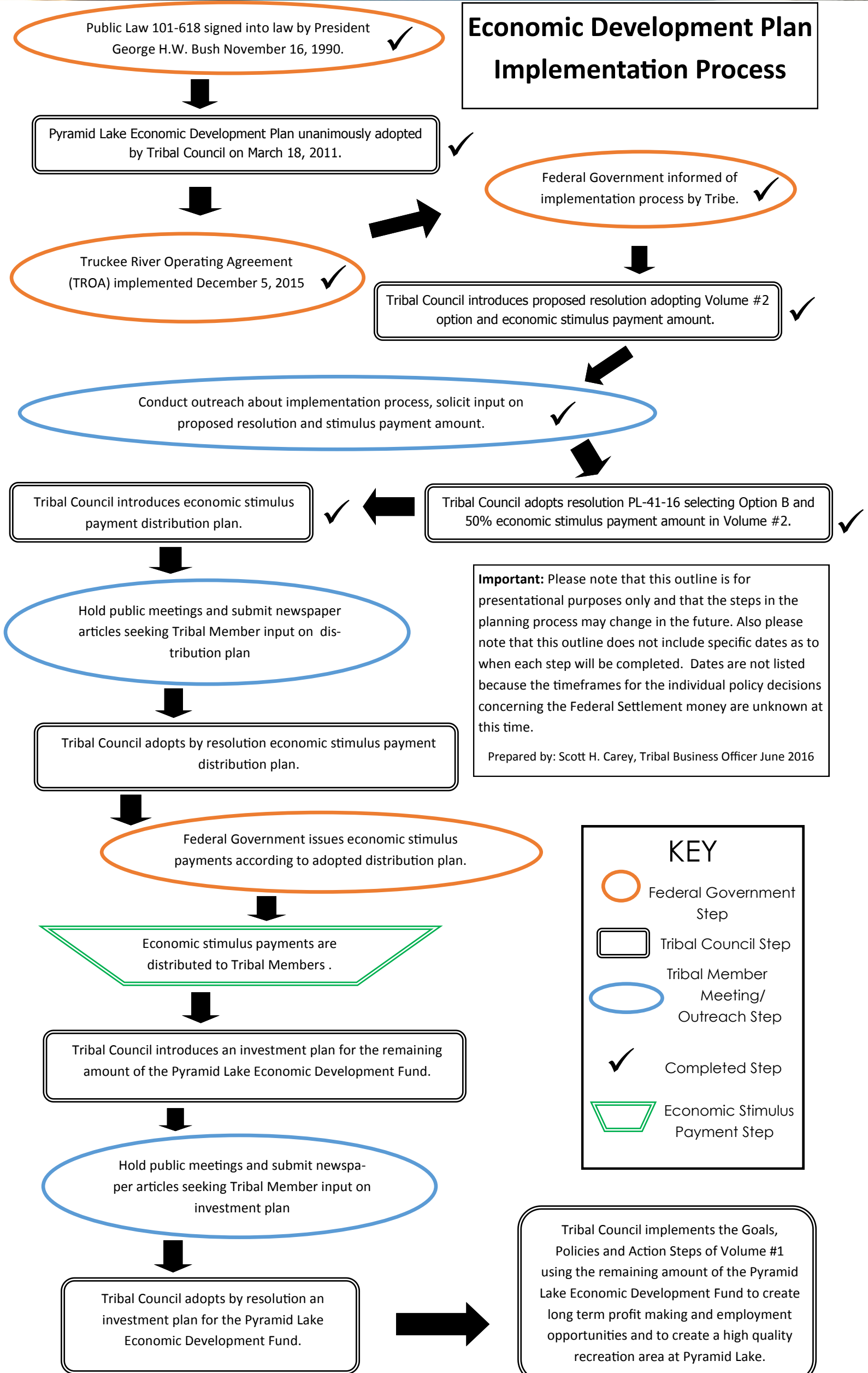
A budget helps you manage your cash flow. Do you have enough to pay for the things that you need, when you need them? If not, how will you manage? What sources of income do you have? What is the frequency – bi-weekly, monthly, quarterly, yearly? What are the expenses you have (housing, food, utilities, car, insurance, gas, attire, entertainment, gifts)? What is their frequency – daily, weekly, monthly, quarterly, yearly?

Review your goals to help make it easier to give up or cut back on things that are really not that important to you. Budgeting is just like anything else in life, it takes practice, so try creating simple budgets to implement them: birthday parties, back to school shopping, Christmas gifts, a special distribution. Then start working on per pay check budgets, monthly budgets, and annual budgets.

Anyone – RICH or POOR – can volunteer in the community with TIME and or MONEY. Donating your time is a great way to learn new things and meet new people that can help with your goals. Be creative when helping others. Some areas to consider supporting: youth or senior programs; environmental issues (preserving lands); cultural or health programs; serving on a Board or Committee (being a voice in your community); or help create a new program to support.


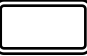



Managing your time is another important aspect of meeting your goals, including financial goals. There is always too much to do and not enough time to do it all. Set aside time to create a plan and monitor your progress - make it a priority.

Economic Development Plan Implementation Process



Important: Please note that this outline is for presentational purposes only and that the steps in the planning process may change in the future. Also please note that this outline does not include specific dates as to when each step will be completed. Dates are not listed because the timeframes for the individual policy decisions concerning the Federal Settlement money are unknown at this time.
Prepared by: Scott H. Carey, Tribal Business Officer June 2016

KEY

-  Federal Government Step
-  Tribal Council Step
-  Tribal Member Meeting/ Outreach Step
-  Completed Step
-  Economic Stimulus Payment Step

Tribal Council implements the Goals, Policies and Action Steps of Volume #1 using the remaining amount of the Pyramid Lake Economic Development Fund to create long term profit making and employment opportunities and to create a high quality recreation area at Pyramid Lake.

DRAFT Economic Stimulus Payment Distribution Plan

Public Comment Period July 18th to August 17th.
Please submit comments to Tribal Business Officer
Scott H. Carey at 208 Capitol Hill Drive PO Box 256
Nixon, NV 89424 or scarey@plpt.nsn.us.

Pyramid Lake Paiute Economic Development Fund Background

Over the last century the Tribe has engaged in on-going legal disputes with the Federal Government over waters rights to the Truckee River and Pyramid Lake. Beginning with the construction of Derby Dam in 1905, diversion of Truckee River water has caused major concern for the survival of Pyramid Lake. The lake level dropped eighty-seven feet from 1912 to 1967. Carrying its disputes to the Federal courts, the Pyramid Lake Paiute Tribe negotiated a landmark decision in 1990 when the U.S. Congress passed the Truckee-Carson-Pyramid Lake Water Rights Settlement Act, Public Law 101-618.

Public Law 101-618 Section 208(a)(3) authorized the appropriation of the Pyramid Lake Paiute Economic Development Fund in the amount of \$40,000,000. The fund was appropriated in 5 equal installments in 1993, 1994, 1995, 1996, and 1997. Since its initial \$40,000,000 appropriation the fund has gained interest in a Federal Government account. Today the interest amount is worth more than principal amount. The purpose of both the principal and interest amounts of the fund is to develop long-term, profit making opportunities for the Pyramid Lake Tribe and its members, to create optimum employment opportunities for Tribal Members and to establish a high quality recreation area at Pyramid Lake using the unique natural and cultural resources of the Pyramid Lake Indian Reservation.

The Tribe believes an effective use of the Pyramid Lake Paiute Economic Development Fund is a great way to maximize job creation and revenue for the Tribe is to put 50% of interest amount of the fund directly the hands of the Tribal Members through an economic stimulus payment. In order to maximize the use of the principal amount of the fund, the Tribe further believes that the continued management of the fund by the Federal Government is prudent.

IMPORTANT NOTES

1) The Tribal Council of the Pyramid Lake Paiute Tribe unanimously adopted Resolution PL41-16 which allows a distribution equal to 50% of the interest amount of the Pyramid Lake Paiute Economic Development fund. Each living enrolled member of the Tribe is eligible to receive an equal economic stimulus payment from that distribution amount.

2) The Federal Government will issue the economic stimulus payments to each eligible, living enrolled members regardless of age.

3) Tribal Members above the age of 22 at the time of distribution will be issued an economic stimulus payment in the form of lump sum check from the Federal Government.

4) Tribal Members under the age of 22 at the time of distribution will have their economic stimulus payment placed in a minor's account to be managed by the Federal Government until the eligible Tribal Member reaches an age of 22 years old.

5) The Pyramid Lake Paiute Tribe is not requiring anyone to accept this payment, nor is the Tribe entering into a contract to make the payment or guarantee the payment.

6) It is the intention of the Pyramid Lake Paiute Tribe that all economic stimulus payments be sent directly from the Federal Government to the individual Tribal Member. The Tribe will only be responsible with providing the Federal Government with a payment roll of information that is required to make the payments.

7) The economic stimulus payment will be in the form of a lump sum payment and will be exempt from Federal Income Tax requirements.

8) Although the economic stimulus payments are exempt from Federal income tax requirements, these payments may also affect the eligibility of persons and families for certain Federal and State programs. These programs include but not limited to; food stamps, Supplemental Security Income (SSI), General Assistance, Head Start, Women, Infant & Children (WIC), Low-Income Energy, among other programs. It is the recipient's responsibility to check with the administering agency of that program to see what effect the economic stimulus payment may have on eligibility or amounts of assistance.

9) If an economic stimulus payment check is returned or otherwise not claimed, the Federal Government will hold the funds for a period of time in accordance with existing regulations and policies. After a diligent search the payment shall be voided for disbursement and returned to the Pyramid Lake Paiute Economic Development Fund.

10) It is a Tribal Member's responsibility to ensure their current address and social security information is on file with the Tribal Enrollment Office.

11) All new applications for Tribal enrollment must be submitted to the Tribal Enrollment Office by September 30, 2016.

Economic Stimulus Payment

Each eligible, living enrolled member of the Pyramid Lake Paiute Tribe as of September 30, 2016 shall receive an equal economic stimulus payment from the distribution of the Pyramid Lake Paiute Economic Development Fund.

In order to receive an economic stimulus payment each living, eligible enrolled member of the Tribe must have a current mailing address and social security number on file at the Tribal Enrollment Office prior to the date of distribution.

The application for updating mailing address or social security information must be completed in its entirety. Any incomplete sections of either form or failure to provide the required information may cause a delay in receipt of an economic stimulus payment.

Tribal Member Eligibility Requirements to Receive a Economic Stimulus Payment

Each eligible, living enrolled member of the Pyramid Lake Paiute Tribe shall receive an equal economic stimulus payment from the distribution of the Pyramid Lake Paiute Economic Development Fund. The economic stimulus payment will be in the form of a lump sum payment check and will be exempt from Federal Income Tax requirements.

In order to receive an economic stimulus payment from the Federal Government, a member of the Tribe must meet the following requirements.

1) Be a living enrolled member of the Pyramid Lake Paiute Tribe in accordance with Tribal Enrollment Law.

3) Have an active Social Security number and current mailing address on file.

4) Be included on a certified payment roll of eligible members that is approved by the Tribal Council and submitted to the Federal Government.

Minors & Supervised Trust Accounts for Economic Stimulus Payments

Eligible Tribal Members who are under the age of 22 at the time of distribution by the Federal Government will be given an equal economic stimulus payment. However, their share of the fund will be placed in a minor's account to be managed by the Federal Government until the eligible Tribal Member reaches an age of 22 years old. Upon eligibility to access the fund, Tribal Member will do so in accordance with existing Federal regulations and policies.

Future withdraws of an individual minor's account would be exempt from Federal Income Tax requirements. Any interest earned in the account will be retained by the eligible Tribal Member. At age 22 the eligible Tribal Member would submit a request to the Federal Government to withdraw their economic stimulus payment. If the minor does not claim their funds within six years of their 22nd birthday, or if the minor cannot be located after a diligent search within six years of their 22nd birthday, then the Tribe may request in writing that the funds be deposited into the Economic Development account.

Eligible Tribal Members who are deemed not able to receive their own economic stimulus payment or are prohibited from doing so by a court order to similar action at the time of distribution will be given an equal economic stimulus payment. However, their share of the fund will be placed into a supervised account to be managed by the Federal Government until the eligible Tribal Member is able to withdraw their payment. Future withdraws from an individual supervised account would be exempt from Federal Income Tax requirements. Any interest earned in the account will be retained by the eligible Tribal Member. When able to withdraw their payment the Tribal Member will need to submit a request to the Federal Government in accordance with existing regulations and policies. Any uncashed or returned checks shall be placed in a separate returned account held by the Federal Government. If, after six years and a diligent search for the individual recipient, the funds remain in the returned account, then the Tribe may request in writing that the funds be deposited into the Economic Development account.

Amendment or Repeal of Plan

This plan, and any Section, part, and word thereof, may be amended or repealed by adoption of a resolution from the Tribal Council. Authorization is given to the Tribal Council to make any technical changes or amendments necessary to achieve the approval of this plan by the Federal Government.

A copy of the plan can be accessed at www.plpt.nsn.us or can be mailed for free upon request by calling 775-574-1000.

FINANCIAL CORNER

Financial literacy is the ability to understand how money works in the world: how someone manages to earn or make it, how that person manages the money they have, how he/she invests it (turn it into more) and how that person donates it to help others.

Financial literacy is a set of skills and knowledge that allows an individual or community to make informed and effective decisions with their financial resources. To make informed and effective decisions with your money, identify and set your personal or community goals.

What are your short-term goals (less than one year)? What are your mid-range goals (from one to five years)? What are your long-term goals? For each goal, outline how you intend to reach it, determine the cost, and how you plan to pay for it. Some goals may not require a financial cost, but a time commitment. Do your goals compete with other family member or community goals?

After setting your goals, work on managing your financial resources. A budget is a written plan for how to spend, save, and invest money. It is a tool to help you keep track of how much you earn and how much you spend. You can also use it to figure out how much you can afford to save and invest.

A budget helps you manage your cash flow. Do you have enough to pay for the things that you need, when you need them? If not, how will you manage? What sources of income do you have? What is the frequency – bi-weekly, monthly, quarterly, yearly? What are the expenses you have (housing, food, utilities, car, insurance, gas, attire, entertainment, gifts)? What is their frequency – daily, weekly, monthly, quarterly, yearly?

Review your goals to help make it easier to give up or cut back on things that are really not that important to you. Budgeting is just like anything else in life, it takes practice, so try creating simple budgets to implement them: birthday parties, back to school

shopping, Christmas gifts, a special distribution. Then start working on per pay check budgets, monthly budgets, and annual budgets.

Anyone – RICH or POOR – can volunteer in the community with TIME and or MONEY. Donating your time is a great way to learn new things and meet new people that can help with your goals. Be creative when helping others. Some areas to consider supporting: youth or senior programs; environmental issues (preserving lands); cultural or health programs; serving on a Board or Committee (being a voice in your community); or help create a new program to support.

Managing your time is another important aspect of meeting your goals, including financial goals. There is always too much to do and not enough time to do it all. Set aside time to create a plan and monitor your progress - make it a priority.

Written by Breakwater Investment Group, a Native-owned independent Registered Investment Advisor, founded in 2003 to assist clients with their financial and investment goals. In 2012, Breakwater created a practice dedicated to working with Native American Communities, led by educated and experienced Tribal financial professionals. Leilani Wilson Walkush (Senior Consultant), David Walkush, CFA® (Portfolio Manager) and Paul Arrington, CRPC® (Consultant) are enrolled members of the Central Council of Tlingit and Haida Indian Tribes of Alaska. Breakwater works with Tribal governments, Tribal enterprises, Tribal housing authorities, Tribal colleges, and individual Tribal members.

For information about our custom Tribal financial literacy workshops and other services, please contact us. Breakwater Investment Group, LLC
Phone: 949.812.6945
Fax: 702.448.5459
EMAIL: Leilani@BreakwaterInvestmentGroup.com

This material is intended for informational purposes only and should not be construed as legal advice and is not intended to replace the advice of a qualified attorney, tax adviser, investment professional or insurance agent.

Financial Benefits of Saving Early

	Mary	Tim
Age when started saving/investing	Age 19	Age 26
Yearly investment	\$2,000	\$2,000
Total years invested	8	39
Total invested	\$16,000	\$78,000
Years earning interest	46	39
Value at age 65	\$1,035,000	\$833,135
Minus investment	-\$16,000	-\$78,000
Net Earnings	\$1,019,000*	\$755,135*

*Assumes a 10% annual return, does not take into account taxes and fees, and is used for illustrative purposes only. Your own individual investment performance will vary with market conditions.



Photo of grand entry on Friday night of the 8th Annual Sacred Visions Powwow at Big Bend Ranch in Wadsworth. Photo by Larry Burton

Solar Project Development Opportunity for Pyramid Lake Paiute Tribe

As you may know the Pyramid Lake Paiute Tribe has been negotiating with Invenergy LLC to construct a utility solar power project. It's important that this process involve the community to both inform as well as gather input. An involved community makes agreements stronger and projects better.

Prior to working with Invenergy, I was employed by Black Rock Solar and was involved in developing some of the solar projects the tribe owns. While at Black Rock Solar, I started the process of "matchmaking" between the tribe and solar developers. The goal was to attract a large developer to work with the tribe and construct a large project that would generate income for the tribe via a long term lease and tax revenue and just as importantly create new jobs.

I am happy that Invenergy is that company. Invenergy is a leading, multi-technology, energy company developing, constructing, owning, and operating projects in the US, Canada, Argentina, Scotland, and Poland. Invenergy owns and operates wind, solar, natural gas, and energy storage projects and develops the best project for the location. The projects are all clean power helping the US get away from dirty coal fired power generation, reduce our dependence on imported energy, save water, and combat climate change.

The project proposed is very similar to the existing solar projects the tribe owns in that it will use solar panels, inverters, and racking. It differs in that it will be much larger, use racking that follows the sun, and sell the power to the local utility or a large industrial customer instead of use on site.

I started the project as economic development for the community which is jobs, increased volume at tribal businesses, and lease and tax income. The benefits would last 20 to 30 years. If an agreement is reached, the tribe would lease land to Invenergy in a landlord tenant relationship. The tribe would spend no money and take no financial risk. Invenergy will spend all of the money needed for the tribe's legal costs, pay for a Project Coordinator to work for the tribe, pay for all of the environmental and cultural studies, engineering, construction, and operation of the project. The tribe would be paid lease payments, taxes, and TERO. Tribal members would receive preferential hiring status, tribal businesses would receive income from fuel and food, and raw materials. This is what I started this project for.

All that said, no form of human endeavor comes without impacts. The first thing we need to do is identify those impacts and address them. Solar power uses very little water

(most of that is in construction, otherwise we wash the panels if needed), does not pollute the air, makes minimal noise (cooling fans on the inverters and transformers), and can be removed at the end of the project life to leave the land flat and revegetated with native grasses. The other side of the coin is that a project can be seen on the land and removes that land from grazing or other uses.

I have been before the council several times, held a community meeting in Wadsworth and attended the War Memorial celebrations in Nixon in May, met with the Cultural Resources Committee, Interdisciplinary Team, and various departments. I will be attending additional community events, holding community meetings, and will be taking tribal government members and community members to see another solar project being constructed (near Hawthorne, NV) in the coming weeks and months. Please reach out to me or the Project Coordinator (should be in place this month). Your questions and input are extremely valuable I making this a successful project for the community.

Richard Hamilton
Project Development Invenergy LLC
775-315-8161
RHilton@invenergyservices.com

2016 BURNING MAN EVENT TRIBAL LOCAL ACCESS

WHAT IT IS & WHAT IT COSTS

- Within the number available, those meeting the qualifications below ("Local") will get a no cost, non-transferrable entry credential, in the form of a wristband, and a no cost vehicle pass if needed.
- The wristband is applied securely at the time it is picked up, and includes the name of the person to whom it is issued. Under no circumstances may it be resold or transferred.
- The wristband is good for in and out privileges.
- There are a limited number of credentials available, being eligible for a Tribal Local Credential does not guarantee you access to one.

WHO QUALIFIES FOR A TRIBAL LOCAL CREDENTIAL

- Pyramid Lake Paiute Tribal members who live on the reservation (verified by Tribal Office).
- Spouses of Tribal Members who are not Tribal Members but who live with their spouse on the reservation (again, as verified by the Tribal Office).
- At the Tribal Office's discretion, a limited number of approved Tribal Employees who work on the reservation.
- You must provide proof of ID and residency. If your Tribal ID lists a PO Box for your address you will also need to show a recent utility bill or legal document showing your full name and residential address (example: propane bill, phone bill, rental or lease agreement, etc.)
- Credentials are issued to those 13 years old and over. Anyone under 18 must have their parent or legal guardian request their credential and cannot enter the Burning Man event site unless accompanied by a parent or legal guardian.

PROCESS/POLICY

- You must register at the Tribal Office in Nixon on Sunday, July 31, 10am-4pm. Registration is first-come, first-served, taken in the order people arrive.
- You will need to complete a form for the Tribal Office to verify your eligibility. Once confirmed, Burning Man Ticketing will complete your registration and give you a registration receipt and pick up instructions.
- Wristbands and vehicle passes are issued at the Box Office at the front gate of the event.
- Anyone caught selling or transferring a Local Credential or vehicle pass will be permanently barred from participating in this program in the future.

QUESTIONS? email locals@burningman.org

REGISTRATION LOCATION & HOURS:

Tribal Office in Nixon on Sunday, July 31, 10am-4pm

PICK UP LOCATION & HOURS:

Registered Tribal Locals can pick up their wristbands beginning **Sunday, August 28 at 10am through Wednesday, August 31** at the Box Office located at the front gate of the Burning Man event. Valid ID required for pick up.

ENTRY TO THE EVENT BEGINS 10am SUNDAY, AUGUST 28. NO ONE WILL BE ADMITTED BEFORE 8/28 WITHOUT A PRE-APPROVED PROJECT-RELATED EARLY ARRIVAL PASS.



One Day Only!!!

Burning Man Sign-ups

July 31, 2016
Tribal Chambers

One Day Only!!!

- Resident Verification
- 1 Tribal ID
- 2 Bill w/Physical address (gas, electric, phone)
- 3 if spouse need spouse card



One Day Only!!!

Burning Man Sign-ups

July 31, 2016
Tribal Chambers

One Day Only!!!

- Resident Verification
- 1 Tribal ID
- 2 Bill w/Physical address (gas, electric, phone)
- 3 if spouse need spouse card



One Day Only!!!

Burning Man Sign-ups

July 31, 2016
Tribal Chambers

One Day Only!!!

- Resident Verification
- 1 Tribal ID
- 2 Bill w/Physical address (gas, electric, phone)
- 3 if spouse need spouse card

If you have been assaulted....

- Look for safety and support. Call a trusted friend or advocate that can help you. Crisis call hotlines may be able to help.
- Seek medical attention as soon as possible. At a clinic or a hospital, a doctor can check for injuries or provide medicine to prevent pregnancy or sexually transmitted infections as well as collect evidence in case you choose to press charges.
- Consider reporting the assault to the police.
- Emotional healing can take time. Meet with a counselor or joining a support group that can help you sort out your feelings.

It is essential for you to have a support system as well. Do not ignore your needs as well. If you would like to make an appointment for an individual counseling session please feel free to contact us at (775) 575-9444.

" The survivor needs to believe that whatever they did during the assault was the right thing to do because it saved their life."



Sexual Assault Support Services

Crisis Call Center

(775) 784-8090

1-800-992-5757

This project is supported by the Tribal Sexual Assault Services Program Grant # 2012-KT-AJ-0007 Violence Against Women, US Department of Justice. The opinions, findings, conclusions and recommendations expressed in this publication/program/exhibition are those of the author(s) and do not necessarily reflect the views of the Department of Justice, Office on Violence Against Women.

Pyramid Lake Sexual Assault Support Services

**Pyramid Lake Victim Services Program
101 Big Bend Ranch Road
Wadsworth, Nevada 89442
(775) 575-9444**



Feel like you are going crazy?

Sexual abuse survivors often feel alone and powerless. Guilt, shame, and fear are the most common feelings in survivors. Many also experience flashbacks, anxiety attacks, depression, eating disorders, and difficulty sleeping. Healing can be frustrating and isolating.

YOU ARE NOT ALONE!!

Native American women are 3.5 times likely to be raped or sexually assaulted than women of other races. 1 out of 7 men will be a victim of sexual assault. **YOU DO NOT HAVE TO FIGHT ALONE!**

We are here to assist Victims of Crime and to provide resources for making positive life choices. To provide a non-judgmental, supportive environment respecting the dignity of those we assist. To educate the Tribal community on the issues of domestic violence and sexual assault.

Who we serve.....

We welcome ALL survivors of sexual assault. We also provide resources for friends and family of survivors.

Healing is possible!

Recovery takes time, but there are a number of things that can help. Therapy and support groups can be invaluable. Journaling and reading about other survivors experiences are also helpful for many survivors.

Lending Library.....

Check out the books in our new Resource Library. We have books available on sexual abuse, self-help books, healing and recovery as well as some books for

Advocacy Services

We have a sexual assault advocate available 7 days a week 24/7 to.....

- Accompany victim to medical facility
- Provide immediate crisis intervention
- Assist with reporting the assault to law enforcement
- Offer information and referrals for medical treatment, counseling and other services
- Help file Victims Compensation applications
- Accompany victim to law enforcement interviews and court proceedings
- Support victim through the healing process
- Assist victim with the immediate needs such as clothing, transportation, shelter and emergency security measures
- Offer referrals to local traditional healers as well as local churches and other healing resources

THPO, CRC seeking oral histories on Pyramid Lake Wars I & II

By Betty Aleck

NIXON –The Tribal Historic Preservation Office received a \$49,000 grant from the National Parks Service American Battlefield Protection Program (ABPP) to survey and record Pyramid Lake Paiute Tribal Wars I & II.

The THPO and Cultural Resources Committee are seeking oral history stories from tribal members who want to share family stories about the two battles.

The NPS awarded more than \$1.19 million to 25 non-profit groups, tribal, federal, state, nonprofit groups and educational institutions including the PLPT.

“From a swamp of Connecticut, to shipwrecks off the shore of Yorktown, to a small island in Pearl Harbor: these places hold clues to our past,” said NPS Director Jonathan B. Jarvis. “Preserving and understanding these sites allows us to reveal a complex history representing mul-

multiple sides of the story, as well as stories of sacrifice and heroism that ultimately shaped our nation today.”

ABPP provides funding to projects such as endangered battlefields from the Indian Wars, Pequot Revolution, Second Seminole War, Civil War, and World War II. Awards were given to projects in 16 states entailing archeology, mapping, cultural resources survey work, documentation, planning, education and interpretation.

Oral history may provide in-depth information about Numu history, which is essential in preserving the past for future generations. These stories may provide information about major battlefield locations, which may serve as a future interpretive location or a site that maybe determined to be sensitive and would need to be protected.

All information obtained from the project is confidential. Interviewees will be

given the option of whether they want their stories to be included in a report or to remain private.

The project includes an archeological field survey of the two battlefields, review of past oral history, geophysical surveys, GIS modeling of the battlefields and recording present day oral history stories.

Following a bidding process, the Cultural Resources Committee selected Vierra & Associates as the archaeological firm to conduct the survey and research. Because this is a National Park Service grant, the granting agency requires the principal investigator of the firm to must meet the qualifications set forth in the Secretary of Interior’s Professional Qualifications Standards.

For more information about this project call the THPO at 574-2404.



Pyramid Lake Paiute Tribe Public Utilities District Water Conservation Tips

- **Turn off the tap while brushing your teeth:** Water comes out of the average faucet at 2.5 gallons per minute. Don't let all that water go down the drain while you brush! Turn off the faucet after you wet your brush, and leave it off until it's time to rinse.
- **Turn off the tap while washing your hands:** Fix your leaks. A small drip from a worn faucet washer can waste 20 gallons of water per day. Larger leaks can waste hundreds of gallons. Put a little food coloring in your toilet tank. If, without flushing, the color begins to appear in the bowl within 30 minutes, you have a leak that should be repaired immediately. Most replacement parts are inexpensive and easy to install.
- **Cut your showers short:** Older shower heads can use as much as 5 gallons of water per minute. Speed things up in the shower for some serious water savings. Inexpensive water-saving low-flow shower heads or restrictors are easy for the homeowner to install. Also, long, hot showers can use five to ten gallons every unneeded minute. Limit your showers to the time it takes to soap up, wash down and rinse off.
- **Hand-washing a lot of dishes:** Fill up your sink with water, instead of letting it run the whole time that you're scrubbing.
- **Plant drought-resistant lawns, shrubs and plant.**
- **Put a layer of mulch around trees and plants.**
- **Water your lawn only when it needs it:** A good way to see if your lawn needs watering is to step on the grass. If it springs back up when you move, it doesn't need water. Most lawns only need about 1" of water each week. During dry spells, you can stop watering altogether and the lawn will go brown and dormant. Once cooler weather arrives, the morning dew and rainfall will bring the lawn back to its usual vigor. This may result in a brown summer lawn, but it saves a lot of water.
- **Water during the early parts of the day; avoid watering when it's windy:** Early morning is generally better than dusk since it helps prevent the growth of fungus. Early watering, and late watering, also reduce water loss to evaporation. Watering early in the day is also the best defense against slugs and other garden pests. Try not to water when it's windy - wind can blow sprinklers off target and speed evaporation.

Transit Schedule

Times	Nixon/Wads/Sutcliffe/Fernley	Wadsworth/Reno
5:20 AM	Nixon Gym	
5:30 AM		
5:45 AM	Wadsworth Community Building	Wadsworth Community Building
6:00 AM		
6:15 AM	Walmart	Sparks CitiCenter (Centennial Plaza)
6:30 AM	Scolari's	
7:00 AM	Wadsworth Community Building	Wadsworth Community Building
7:05 AM		
7:15 AM	Walmart	
7:30 AM	Wadsworth Community Building	
7:45 AM	Nixon - Health Clinic	Reno-Sparks Indian Colony-Admin
7:48 AM		Reno-Sparks Indian Colony-Clinic
7:50 AM	Nixon - Tribal Office	
8:00 AM	Nixon - Gym	ITCN/Welfare DWSS Sparks
8:15 AM		Sparks CitiCenter (Centennial Plaza)
8:20 AM	Sutcliffe - New Housing Proj.	
8:21 AM	Sutcliffe-Desert Flower & Dewey Wy.	
8:30 AM		
8:45 AM	Nixon - Health Clinic	
8:50 AM		Wadsworth Community Building
9:00 AM	Nixon - Gym	
9:05 AM		Fernley Walmart
9:07 AM		Fernley Scolari's
9:30 AM	Nixon - Gym	Wadsworth Community Building
9:48 AM	Wadsworth Community Building (riders can connect to Reno Bus at 10:00 AM)	
10:00 AM	Walmart	Wadsworth Community Building
10:05 AM	Scolari's	I-80 Smokeshop
10:15 AM	Sumunumu/Frontier Fun Center	
10:30 AM	Walmart	
10:45 AM	Wadsworth Community Building	Reno-Sparks Indian Colony-Admin
10:48 AM		Reno-Sparks Indian Colony-Clinic
11:00 AM		Sparks CitiCenter (Centennial Plaza)
11:15 AM		ITCN/Welfare DWSS Sparks
11:30 AM	Sutcliffe - New Housing Proj.	Legends Outlet
11:31 AM	Sutcliffe-Desert Flower & Dewey Wy.	
11:50 AM	Nixon - Health Clinic	
12:00 PM	*Nixon - Tribal Office	Wadsworth Community Building
12:15 PM		
12:20 PM		
12:25 PM		Nixon - Gym
12:45 PM	Nixon - Health Clinic	Wadsworth Community Building
1:00 PM	Nixon - Gym	Fernley Walmart
1:15 PM		
1:30 PM	Wadsworth Community Building	Wadsworth Community Building
1:35 PM		
1:45 PM		I-80 Smokeshop
2:00 PM	Walmart	
2:15 PM	Sumunumu/Frontier Fun Center	Reno-Sparks Indian Colony-Admin
2:18 PM		Reno-Sparks Indian Colony-Clinic
2:30 PM	*Wadsworth Community Building*	Sparks CitiCenter (Centennial Plaza)
2:45 PM		ITCN/Welfare DWSS Sparks
3:00 PM	Wadsworth Community Building	Legends Outlet
3:15 PM	Walmart	
3:30 PM	Wadsworth Community Building	*Wadsworth Community Building*
3:45 PM		
4:00 PM	Nixon - Gym	Wadsworth Community Building
4:05 PM		
4:15 PM		I-80 Smokeshop
4:20 PM	Sutcliffe - New Housing Proj.	
4:21 PM	Sutcliffe-Desert Flower & Dewey Wy.	
4:30 PM		
4:45 PM	Nixon - Health Clinic	Sparks Legends
4:47 PM	Nixon - Tribal Office	
5:05 PM	Wadsworth Community Building	ITCN/Welfare DWSS Sparks
5:15 PM	Walmart	Sparks CitiCenter (Centennial Plaza)
5:30 PM	Scolari's	Reno-Sparks Indian Colony-Clinic
5:33 PM		Reno-Sparks Indian Colony-Admin
5:45 PM	Wadsworth Community Building	
6:00 PM	Walmart	Wadsworth Community Building
6:15 PM		
6:30 PM	I-80 Smokeshop	I-80 Smokeshop
6:45 PM	Wadsworth Community Building	Wadsworth Community Building
7:00 PM	*Nixon - Gym*	*Nixon - Gym*

Times listed are DEPARTURE times, EXCEPT the *BOLD*. *BOLD* times are drop off only.

Connection times between the Nixon/Wadsworth bus and Wadsworth/Reno bus are highlighted in: **YELLOW**

FINAL REVISED SCHEDULE Bus Routes are Monday—Friday

Transit Department will not be in service for Tribal Holidays.

PICK UP / DROP OFF LOCATIONS

- * Walmart—Front between the 2 large doors
- * Scolari's—Back parking lot (next to the laundromat)
- * Sutcliffe—New Housing Project near fire
- * Hydrant/ Desert Flower & Dewey Way
- * Sparks CitiCenter (Centennial Plaza) —Across from Bay M on A Street.
- * Legends—Back parking lot of the Olive Garden. Please be waiting at this stop 10 minutes earlier than scheduled time.**
- * ITCN/Welfare DWSS Sparks—By Subway
- * Reno-Sparks Indian Colony—Admin. Bldg., 34 Res. Rd. & Clinic, 1715 Kuenzli St.
- * I-80 Smoke Shop—Parking lot in front of the store

Fee Schedule:

Nixon/Sutcliffe/Wadsworth/Fernley Bus (One-way)

- Adults \$1.00
- Elders (60 years and up) / Students with School ID / Children ages 6-17 \$0.50

Wadsworth/Reno Bus (One-way)

- Adults \$1.00
- Elders (60 years and up) / Students with School ID / Children ages 6-17 \$0.50

Monthly Pass (Unlimited)

- Adults \$45.00
- Elders (60 years and up) / Students with School ID / Children ages 6-17 \$22.50

Fees for Monthly Passes are paid to the Finance Department at the Tribal Building. Please take the receipt to the Transit Office to receive the pass. Contact the Transit Office for further details.

Children ages 14–17 must have a PLPT ID badge to ride the bus alone. Please contact the Transit Office for further details.

Children 5 years and younger are free.

Scheduled times and locations may vary pending weather, unforeseen circumstances, and necessary schedule changes.

Buses are monitored by cameras.

Buses may run 5-10 minutes behind pending heavy traffic.

MUST HAVE EXACT CHANGE—DRIVERS DO NOT CARRY CASH

The first Wednesday of every month, the Wadsworth/Reno Bus will NOT be in service due to vehicle maintenance

Pyramid Lake Tribe Transportation Planning Department

The Transportation Planning Department continues to stay the course with the projects on the books for the department as well as planning for future projects related to transportation.

Wadsworth Bypass Project

The Transportation Planning staff has submitted a grant application for another round of the Tiger Grant. All submissions are in the process of review and the department staff is waiting to hear the results of their submission. We are confident that our submission met the requirements of the grant to fund the Wadsworth Bypass Project. The project will allow large traffic such as trucks and commuter traffic to bypass the Wadsworth community and greatly reduce the pedestrian hazards that are present now in the Natchez School zone.

Mapping Project

The Transportation Planning Department must conduct an inventory update every 4-5 years to add roads to our BIA inventory to make them eligible for improvements. This year the department has opted to create a map of the Pyramid Lake Reservation which in its simplest format will show the roads that are already in existence. From this map we will pinpoint any roads that are not on the inventory and add them in. The Department envisions adding the major inlets to the lake to improve and manage access to the beaches through roads and trails. Additionally, we hope to extend the bike route to include a path on the west side of the lake from Popcorn Beach to Sutcliffe. This will be a great addition for the families and friends of Pyramid Lake to

take advantage of on good weather days.

If any community members are aware of any public access roads on the reservation that may not be on the inventory please give the department a call.

Once the map is complete we will begin the process of listing the roads that we plan to formally place on the inventory.

Transportation Safety Plan

The Tribes Transportation Safety Plan is in effect and the department is working to implement and track the progress we are making on the goals and objectives of the program.

The mapping project and planned engineering of safer routes on the reservation is one of our priorities which we are steadily making progress on.

Through a partnership with the State of Nevada Department of Transportation Safety Program we are able to get child safety seats for those families who need them and may not be able to afford them. This program is on an as needed basis and relies on the availability of funds through the state to purchase the seats. If you have any questions regarding this program please feel free to contact Sherry Ely-Mendes, Transportation Planning Administrative Assistant for more information.

The department is also collaborating with the NVDOT to conduct a "Bike Rodeo" during the Tribes recreation summer program in July. The event will teach children safety aspects of riding their bikes and also have freebies for them to

take home. We hope to have a good turn out as education is the best way for kids to stay safe and healthy.

Community Transportation Association of America Collaboration

During the month of June the Tribal Transit in collaboration with the Transportation Planning program welcomed a warm visit from Charles Rutkowski, Director of Technical Assistance Programs from Community Transportation Association of America (CTAA), Washington D.C. Mr. Rutkowski's role in developing the Tribe's Transit Department was a very important one as he was able to see how far and successful the Transit currently is by running two 14 passenger buses and employing a staff of 6 full-time employees. The recent visit from Mr. Rutkowski entailed plans for developing a Transportation/Transit facility located within the boundary of the reservation. A Request for Proposal for the facility project is currently being posted for public review. The CTAA will provide continued guidance to the Pyramid Lake Paiute Tribal Transit Program throughout the planning phase for the transit facility.

New Revised Bus Schedule

Both of the Transit Bus Schedules will be making changes to bus routes by adding stops to the Reno/Sparks, Wadsworth and Fernley areas during the month of July. Designated areas will have the updated schedules available for the public as soon as a finalized schedule is completed.



News from the Housing Authority

We are accepting applications throughout the year for the low rent programs: Scattered Sites (Wadsworth, Nixon & Sutcliffe), the Townhouse Complex units (Wadsworth & Nixon), and the Home Ownership Program. Call and request applications to be mailed to your address or drop by the office hours are 8 am through 4:30 pm.

The Housing Authority is looking for family (immediate members) of the late Frances McKay. We have in our position 1 van and all her worldly possessions. Please contact Vicki Moyle, Executive Director at 775/574-1026. You will have 30 days to contact Housing and then all possessions will be properly disposed of.

Water conservation is a very important part of home ownership. Please check your home for water leaks which promote the potential for mold growth. You need to check your hose bibs, under each of your sinks (Kitchen & bathroom(s)), your water closets (toilet(s)) inside and shut off valves. Make sure when cleaning your yard free of weeds to leave the dirt in place and just remove the weed itself. This way the concrete sidewalks and porch(s) are not weakened by removing the dirt away from them. There are too many times the yards are very clean and free of weeds but the concrete has been exposed causing unforeseen hazards and potential for stress cracking. The dirt needs to be around it to support the concrete.

Reminder the BIA HIP applications are due into the Housing Office by July 22, 2016 by 4:30 pm.

Tribe Receives \$20,000 Grant to Fund Cultural Summer Day Camp

The Tribe is pleased to announce the award of a \$20,000 grant from the First Nations Development Institute of Longmont, CO. This award will support a summer day camp program held July 5-29 that will teach elementary school-aged youth Paiute culture and heritage. Tribal elders and community members will also participate in this program by sharing knowledge of Paiute culture, language and history in both hands-on and classroom settings.

Local college and high school students will be hired to serve as peer mentors and to assist with camp activities. Students will be taught traditional Paiute dances and songs, make handgame pieces, learn Paiute history with field trips to historic sites and participate in programs that focus on prevention, wellness and physical fitness. Essential to the program is making traditional clothing (dresses and shirts) which will culminate to the formation of a dance group. Also key to the program is a language immersion program where students will learn the "NUMU" language, games, and songs.

"This grant will have a major impact on essential services the Tribe plans to provide youth this summer, as it seeks to preserve, strengthen, and renew Native Paiute Culture among its youth" said Tribal Chairman Vinton Hawley. "By investing in its youth and giving them a sense of community and tradition, the Pyramid Lake Paiute Tribe is ensuring that it will have strong future leaders. The Tribe commends the First Nations Development Institute for its support of this much needed summer day camp project".

The Tribal Parks and Recreation Department will facilitate the Summer Day Camp with the majority of the camp activities taking place in the community gym and modular classrooms in Nixon, NV. The target population for the summer camp program is elementary school-aged children. Other target populations include PLPT Tribal Elders who will serve as consultants and high school and college students who will be employed to help facilitate the program.

For further information, please contact Janet Davis, Parks and Recreation Director, at jddavis@plpt.nsn.us or 775-384-4350.

PYRAMID LAKE PAIUTE TRIBE
Current Open Positions

As of
 7/26/2016

CHILDCARE COOK/NUTRITIONIST

Pyramid Lake Child Care Center, Wadsworth, Nevada
 \$10.20-\$10.72 per hour; Part-Time, Non-Exempt, Class 127, Grade 8, Step 1-3 DOE
 CLOSES: 7/29/2016

Health Clinic, Nixon, Nevada

\$11.81- \$12.41 per hour, Full-Time, 40 Hours Week, Exempt, Class 363, Grade 11, Step 1-3 DOE
 CLOSES: 08/02/2016

SECURITY GUARD-BURNING MAN

\$10.20- \$10.72 per hour; Part-Time, On-Call, Non-Exempt, Class 151, Grade 8, Step 1-3 DOE
 CLOSES: 08/01/2016

RETAIL CLERK- BURNING MAN

Tribal Enterprise, Nixon, Sutcliffe, & Wadsworth, Nevada
 \$8.39- \$8.81 Per Hour, On-Call Seasonal, Non-Exempt, Class 123, Grade 4 Step 1-3;
 CLOSES: OUF

ENTERPRISE MANAGER

Tribal Enterprises, Wadsworth, Nevada
 \$41,995.20- \$44,116.80 Per Annum, Full-Time, 40 Hours Week, Exempt, Class 525, Grade 22, Step 1-3; DOE
 CLOSES: OUF

RETAIL CLERK (on-call)

Tribal Enterprises, Wadsworth, Nixon, Sutcliffe, Nevada
 \$8.39- \$8.81 per Hour, Part-Time, On-Call, Non-Exempt, Class 123, Grade 4, Step 1-3;
 CLOSES: OUF

ENVIRONMENTAL SPECIALIST

Environment Department, Nixon, Nevada
 32,905.60- \$34,590.40 Per Annum, Full-Time, 40 hours week, Exempt, Class 432, Grade 17, Step 1-3; DOE
 CLOSES: OUF

CHILDCARE PROVIDER

Pyramid Lake Child Care Centers, Nixon, & Wadsworth, Nevada
 \$10.20-\$10.72 per hour; Part-Time, 29 Hours Week; Non-Exempt, Class Code 112, Step 1-3 DOE
 CLOSES: 07/29/2016

ACCOUNTS PAYROLL TECHNICIAN

Payroll, Finance Department, Nixon, Nevada
 \$15.07-\$15.84 per hour; Full- Time, 40 Hours Week, Non-Exempt, Class 351, Gr 16, Step 1-3; DOE
 CLOSES: OUF

BEHAVIORAL HEALTH PROGRAM DIRECTOR

Health Clinic, Nixon, NV; Dawna Brown, Supervisor
 \$59,092.80 - \$62,088.00 Per Annum; Full-time, 40 Hours Week; Exempt, Class Code 412, Step 1-3 DOE
 CLOSES: OUF

TRIBAL COMPTRROLLER

Administration, Nixon, NV
 \$59,092.80 – \$62,088.00 per Annual; Full-Time, 40 Hours Week, Exempt, Class 607, Gr 29, Step 1-3; DOE
 CLOSES: OUF

SECRETARY II (On-Call)

Pyramid Lake Paiute Tribe, Nixon, Nevada
 \$8.81-\$9.26 per hour; Part-time NTE 2 Hours Week; Class Code 212, Grade 5
 CLOSES:OUF

HEALTH BENEFITS REPRESENTATIVE

Health Clinic, Nixon, Nevada, Supervisor(s) Shari Williams
 \$13.67 – \$14.36 Per Hour; Full-Time 40 hours per week, Non-Exempt CL 211, Gr 14, Step 1-3; DOE
 CLOSES: 07/27/2016

The Human Resources Department is responsible for the Tribes personnel management which includes recruitment, employee relations, employee benefits program, salary administration, worker's compensation, grievance and appeal system, and personnel records management. Human Resources provides assistance to Department Heads and Supervisors in developing, communicating, and implementing the Tribe's personnel policies.

CULTURAL CENTER/MUSEUM ATTENDANT

Cultural Center/Visitor's Center, Nixon
 \$9.71 - \$10.20 per hour; Part-Time, Class Code 217, Grade 7, Step 1-3 DOE
 CLOSES: 7/26/2016

Hours of Operation:

Monday - Friday
 8:00 am to 4:30 pm

SHELTER ADVOCATE (ON-CALL)

Victim Services Department, Wadsworth, Nevada
 \$11.81 – 12.41 per hour; NTE 20 hours, Non-exempt, Class Code 309, Grade 11, Step 1-3 DOE
 CLOSES: OUF

Human Resources Staff

Lesley Hawley
lhawley@plpt.nsn.us
 Human Resource Manager
 775-574-1000 X 1120

CUSTODIAL WORKER (On-Call)

Maintenance Department, Nixon, Nevada
 \$8.39-\$8.82 per hour; On-Call, As needed, Non-Exempt, Class Code 136, Grade 4, Step 1-3 DOE
 CLOSES: OUF

Latoyah Williams
 Human Resources Assistant
hrrassistant@plpt.nsn.us
hrrecruiter@plpt.nsn.us
 775-574-1000 X 1119

OPTOMETRY TECHNICIAN

Ed Harney
eharney@plpt.nsn.us
 Background Investigations
 Located at the Police Department
 (775) 574-1014

www.plpthumanresources.org

SUMUNUMU

2016




In this issue:

- Window clings 1
- Elder sensitivity 1
- Higher Education 2
- Resources 3

New look for Sumunumu Resource Center, window clings created by Adrian Tom, Prevention Coordinator. We are located at 460 W. Main St. Suite 101 Fernley Come by and check out our new look.

Sumunumu Elder Sensitivity ~ June 15, 1026~ Tribal chambers

Purpose of this activity is to gain empathy for aging (elder) population for those who work with or provide services, or volunteer with aging population. This workshop was set for tribal employees and clinic staff.

Sumunumu staff Diana Mitchell, Prevention Coordinator and along with Pyramid Lake Tribal Health Center Tina Nash.

Attendees included Numaga staff and Clinic staff, Pyramid Lake housing authority.

Total 45 people participated in different activities, wearing vision impairment glasses and put on clothing, preparing medications into pill containers all activities were set for regular people to experience what some elders experience so we can better serve the elder population.

Blanket Raffle winner: Pam Spottedwolf, Dental



Resources

- Pyramid Lake Tribal Health Center 775-574-1018
- Sumunumu Main office 775-574-1018
- Crisis Call Number 1-800-273-8255
- More information on MSPI Go to: www.nlib.org and is posted at Sumunumu Resource Center

Trainings

- Parenting classes July 14 - July 21, 2016 Wadsworth Community Center - 5:50 to 7:30
- Community Meth Presentation July 19, 2016 Nixon - Tribal chambers 6:30 to 7:30
- July 20, 2016 - Wadsworth Community Building Time: 6:30 to 7:30 Pm



Sumunumu staff wishes Happy Birthday Kathy Wright

Fernley/Wadsworth AA Meetings



- Sunday 6:00 PM Grapevine Meeting 10 North Center Street - Fernley Community Center
- Monday 12:00 PM Beginners Bible Book 10 North Center Street - Fernley Community Center 07:30 PM Keep It Simple 10 North Center Street - Fernley Community Center
- Tuesday 6:00 PM Step Study Meeting Big Bend Ranch Old Highway 40
- Tuesday AA Talkin' Circle, Nixon 6-7:00 am
- Wednesday 7:30 PM Keep It Simple 10 North Center Street - Fernley Community Center (First Wed CL & Last Wed BDM)
- Thursday 7:30 PM Men's Meeting 875 Freemont St Calvary Chapel
- Thursday 7:30 PM Women's Miracle Meeting 875 Freemont St Calvary Chapel
- Friday 12:00 PM Live Sober 10 North Center Street Fernley Community Center
- Friday 8-9 PM. Road to Recovery Pariah Hall-Wadsworth Nevada
- Saturday 4:00 PM Stearwar To Heaven 875 Freemont St Calvary Chapel

Pyramid Lake Higher Education ~ Graduation Night


June 16, 2016 ~ Nixon Gymnasium. Sumunumu and PL Diabetes program collaborated with the PL Higher education program. Invitations were sent to all Pyramid Lake Tribal graduates 11 of 15 invited graduates were in attendance. Invited Graduates were from Reed, Fernley, Spanish Springs, Bishop Manogue high schools.

Chairman Vinton Hawley gave an inspirational speech to parents and graduates. Anthony Sampson Higher Education provided the invocation. Diana Mitchell, Sumunumu facilitated the event. Diabetes program prepared the meal.

Special thanks to cooks: Nicole Williams, Leon Kinnerson, Janell Fellows, Adrian Tom, Randy Hunter.

Gift Bags were provided by Sumunumu (flash drive, weekend bags, journal, stylist pens, credit card covers) Pyramid Lake Tribe provided gift cards and Palute language CDs and workbook to each of the 2016 Graduates. Pyramid Lake Diabetes provided a short presentation on health foods and provided healthy Chicken Kabobs and special thanks to Numaga for allowing the Diabetes Program to prepare the meal.



Few of the graduates in attendance: Courtney Dunn, Terlan Phillips, Nick Cortez, Eric Marietta, Jar Guerrero, Sirlor Albano

Crisis Call Number: 1-800-273-8255
Tribal Police dispatch: 574-0444
Tell someone! Tell someone! Tell someone!

Substance Abuse Evaluation Process

ONE week is need to get Evaluation back to client.

Call make appointment at Pyramid Lake Tribal Health Center Phone: 775-574-1018 or Sumunumu/ Resource Center Phone: 775-980-6507.

- ◆ Plan for 2 hours to complete GAIN (Global Assessment of Individual Needs)
- ◆ Set up Evaluation review appointment following GAIN Assessment prior to leaving Clinic or Resource Center with Judy Kroshus, Sumunumu Director
- ◆ Client will receive an Walmart gift card of \$20.00 on completion of evaluation review.
- ◆ Evaluation will be given to client unless client signs a release of information for evaluation to be given to a third party.

Adolescent Evaluation Procedure

Same as the adult with exception: Adolescent must sign a release of information for the evaluation to be shared with anyone including **Parent, Social Services and The Courts.** (Per 42 CFR 2.12, 2.12b, Privacy Rule, April 14, 2003. More information call: 775-980-6507



Tribal Members Record Maintenance-Deceased Members:

If possible please send a copy of the deceased member's death certificate or obituary notice to Enrollment Services. The certificate or obituary copy will be placed in the member's file. The Tribe does offer basic burial assistance for Tribal Members; please contact Executive Officer Della John for details.

PYRAMID LAKE MUSEUM/VISITOR CENTER

The purpose of the Museum is to collect, exhibit, and preserve the history and culture of the Northern Paiute People of Pyramid Lake and provide an educational forum for the appreciation, expression, and understanding of the Paiute culture. The Paiute name given to the Museum is "Ki Na Sumoowakwatu," Never to Be Forgotten. The Indian name signifies that we honor our ancestors and the many sacrifices made, so that we can continue our Paiute culture now and for future generations.

There's a lot going on at the Museum, so please stop by to take a look.



The Museum receives many visitors from all over the world, as well as local and national visitors from all over the United States. Our visitor count increased with the warm weather. In April we hit the highest amount of visitors in one month since the Museum opened, with 1,046 people visiting the Pyramid Lake Museum and Visitor Center. The visitor count varies month to month, and is on the rise again. We recently had International visitors from Africa who were all business leaders.

The facility grounds are looking great and we've been busy cleaning and clearing the brush and weeds. Thanks to our Youth Workers – Darnel George, Joesaya Parrish, and Ryan Peters. In addition, thanks to the Tribal Maintenance Department and the Roads Department for their help in running



the machines in our efforts to improve the outside appearance. Maintenance is also required inside the facilities. Collaboration with other departments is essential due to the Museum's limited funding. Everyone's assistance is very much appreciated.

The Digitization Project through the National Park Service Tribal Heritage grant is near completion and we met our goals with the transcriptions of the oral history files. The Museum contracted with Carole Wright as the Transcriptionist and she did an excellent job transcribing interviews, songs, and stories. The project was not easy considering that voice recordings were sometimes unclear, and much of it in the Paiute Language. However, Carole's expertise allowed her work to be completed in less than a month. And, we still had a month to spare before the end of the grant period by July 31, 2016. The Museum will retain the digital files and transcripts for future use.

There were a couple of priceless donations made this last quarter. A man from Reno donated record albums with Paiute Songs sung by Tip Wadsworth. The records will be digitized by a team at the University of Nevada, so they can be archived here at the Museum. The UNR team was just as excited to come upon such a historical find. Another donation, an antique display case, was offered by a woman from Sparks. We're still working on picking up the case to display artifacts here at the Museum.

Larry Burton is a professional photographer



and works with the Museum on a volunteer basis to take pictures of events and scenic areas on the reservation. Larry started taking pictures in May for the Pyramid Lake War Memorial activities and comes out whenever time allows. We have a photo library started and will continue to add photos. Larry recently taught a photography class at the Reno-Sparks Indian Colony and is willing to teach a class at the Museum. Notices will be sent out whenever the class is scheduled and will probably be a limited enrollment.

We had moccasin-making classes on July 6th, 9th, and 13th. We had a wonderful turnout with 50 people, young and old, showing up for the first class. It was heart-warming to see the interaction of all of the participants in sharing with each other, laughing, telling stories, and helping one another. One of the local families had 4 generations

attending the class, a young girl with her mother, grandmother, and great-grandmother! Everyone enjoyed themselves and really got into sewing their moccasin patterns. More interested students showed up for the second class and we cut patterns for about 70 people in total. The moccasin-making class was a huge success! Thanks to our teacher, Sage Dunn, for her time, patience, and expertise in the traditional Paiute moccasins. We will follow up with other craft classes and programs, so be on the lookout for flyers in the near future.

On Saturday, July 9th we held the first of our Native Markets. Vendors sold food, craft supplies, clothes, furniture, household



items, and art work. The Museum was full with students, visitors, vendors, and children. There were almost 200 people in attendance throughout the day! It was a wonderful sight and full of energy! A silent auction was held at the same time to raise funds for the upcoming Traditional Paiute dance contest at the Sacred Visions Pow-Wow. Thanks to Susie Albright and Teresa Wright, Museum Committee members, for their help with the day's activities. Other outdoor Native Markets will be held in the summer months. Watch for flyers for the scheduled dates.

We built a miniature village with kahnees, haba, drying racks, and sweatlodge. Thanks to the Youth Workers and the Environmental Department for gathering the willows and tules. The students from the Tribal Cultural Camp came and helped to fix up the displays that will allow us to provide awareness about lifeways of our Paiute ancestors. The Day Care children from the Wadsworth and Nixon Centers will be having regular days at the Museum starting in July. We will teach the youngsters about the Paiute history, culture, and language.

The Museum will be hosting the Indian Territory meeting on July 20th. Indian Territory is a marketing arm of the Nevada Department of Tourism and coordinates through the Nevada Indian Commission promoting Tribal Tourism. Billie Jean is a voting mem..

PYRAMID LAKE MUSEUM/VISITOR CENTER

Continued from previous page...

member and represents the Tribe in many important and interesting topics.

We will be working on the changing displays featuring the Stone Mother, Language Revitalization, Grandma Flora, and Burton Pete. Family members are eager to contribute information, pictures, and stories for the displays. We have volunteers willing to donate their time to accomplish our goals in creating the displays.

We are looking to have better signage for the Museum to attract more visitors. A lot of people drive by without knowing the Museum is open. Billie Jean is working with the Tribal Business Office to purchase signs near the highway. It would be great to have a "Wave Man," but we need to locate more funding or seek a sponsor. Anyone interest-



ed in sponsoring a "Wave Man" can contact Billie Jean at the Museum.

The Union Pacific Railroad workers will be parking at the Museum starting in August. If you see a lot of trucks parked around the Museum that's what is going on. The workers park in Nixon and then are transported

to their worksite in Gerlach.



Ralph Burns wanted to retire for the last few years and gave notice to resign on July 8, 2016. He will be greatly missed at the Museum with his vast knowledge of Tribal history, customs, language, and culture. Many people enjoyed the presentations given by Ralph, especially the story-telling. Ralph is a valuable resource for the Tribe and a national treasure being recognized for his unselfish work in language preservation. Thanks to Ralph for his many years in Tribal service as he provided a foundation for teaching the ways of the Koo-yoo-e Tukadu. Best wishes to Ralph for good health and happiness in all that he does.

The Shared History Department at the University of Nevada has a display about the Pyramid Lake Museum, Stewart Indian School, Nevada Native Foodways, Indian Reorganization Act, and Fancy Dancing. Feel free to visit the displays prepared by college students in the Museum Studies Program. Billie Jean works closely with Professor Anita Watson regarding best practices for museum management. We are hoping to have a student intern in the Fall se-

mester.

Billie Jean was awarded a scholarship to attend the 2016 International Conference of Indigenous Archives, Libraries, and Museums in Phoenix. The conference will provide relevant workshops addressing issues related to language preservation, digital inclusion, repatriation, collection care, and tours at area Tribal and public museums, such as the famous Heard Museum.

The Museum is supported by the Tribe, and with sales from the gift shop, or donations. The gift shop sales hit an all-time high in the last quarter. We made almost as much in one quarter than all of last year, only a few hundred dollars off. We are sure to surpass last year's total sales. Several of our customers come to the Museum specifically to shop. We sell T-shirts, beadwork, jewelry, books, CD's, DVD's, coffee mugs, water



bottles, and other items. Promotional souvenirs will be available in the near future. The Museum is the place to shop when you're looking for a special gift, so stop by anytime!

Saa a' mu poonedooa! Ki Na Sumoowakwatu!!

**PLTHC, Diabetes Wellness Program presents:
Zumba Classes
Locations: Nixon, Sutcliffe and Wadsworth
Instructor: Michelle McCauley**

- June 23rd, 2016- Nixon, Numaga Senior Center @ 6:30pm-7:30pm
- June 30th, 2016- Wadsworth, New Wadsworth Community Building @ 6:30pm-7:30pm
- July 14th, 2016- Nixon, Numaga Senior Center @ 6:30pm-7:30pm
- July 21st, 2016- Sutcliffe, Sutcliffe Community Building @ 6:30pm-7:30pm
- July 26th, 2016- Wadsworth, New Wadsworth Community Building @ 6:30pm-7:30pm
- August 4th, 2016- Nixon, Numaga Senior Center @ 6:30pm-7:30pm
- August 11th, 2016- Sutcliffe, Sutcliffe Community Building @ 6:30pm-7:30pm
- August 18th, 2016- Wadsworth, New Wadsworth Community Building @ 6:30pm-7:30pm
- September 8th, 2016- Nixon, Numaga Senior Center @ 6:30pm-7:30pm
- September 15th, 2016- Sutcliffe, Sutcliffe Community Building @ 6:30pm-7:30pm
- September 22nd, 2016- Wadsworth, New Wadsworth Community Building @ 6:30pm-7:30pm
- October 6th, 2016- Nixon, Numaga Senior Center @ 6:30pm-7:30pm
- October 13th, 2016- Sutcliffe, Sutcliffe Community Building @ 6:30pm-7:30pm
- October 20th, 2016- Wadsworth, New Wadsworth Community Building @ 6:30pm-7:30pm
- November 3rd, 2016- Nixon, Numaga Senior Center @ 6:30pm-7:30pm
- November 10th, 2016- Sutcliffe, Sutcliffe Community Building @ 6:30pm-7:30pm
- November 17th, 2016- Wadsworth, New Wadsworth Community Building @ 6:30pm-7:30pm
- December 1st, 2016- Nixon, Numaga Senior Center @ 6:30pm-7:30pm
- December 8th, 2016- Sutcliffe, Sutcliffe Community Building @ 6:30pm-7:30pm
- December 15th, 2016- Wadsworth, New Wadsworth Community Building @ 6:30pm-7:30pm

Healthy snacks and water will be available.



Also starting July, a 1st time participant starter kit will be given to all beginning students! Transportation will also be available to community members that reside within the Pyramid Lake Paiute Reservation.

Please contact the Diabetes Wellness Program @ (775)574-0117 for questions or to set up transportation arrangements.

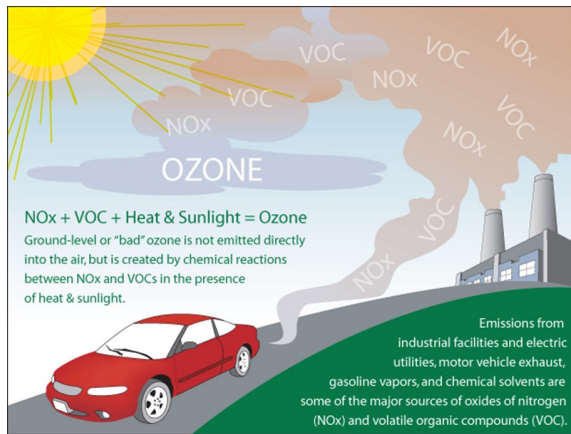
Summertime Air Quality

Tanda Roberts

The Tribal Air Quality Program would like to share with our tribal communities and important message regarding our air quality. During the summer months there are two primary issues of concern when it comes to air quality, ozone and particulate matter (PM).

Ozone

Naturally occurring ozone in the upper atmosphere is considered good because it blocks out harmful UV rays. However, ozone at ground level is a harmful air pollutant. Ground-level ozone, also known as smog, is not emitted directly into the air, but it is created when pollutants from emissions from cars, trucks, buses, power plants, industrial boilers, refineries, chemical plants, and other sources react chemically in the presence of heat and sunlight (EPA).



Health effects linked to ozone exposure include:
Reduced lung function

Shortness of breath
Wheezing
Airway inflammation and damage
Increased hospitalizations and medication use for asthma attacks
Increased susceptibility to respiratory infection
Aggravation of chronic lung disease such as asthma, emphysema, bronchitis
Increased risk of premature death in people with heart and lung disease

Ways to help:

Do not idle your car for long periods of time; even for short periods of time, turn off your engine.
Carpool, ride a bike, or walk.
Reduce your energy use, the less energy you use the less power the utility company has to exert to produce it. **Become energy efficient.**

Particulate Matter (PM)

This past winter we experienced a good amount of precipitation leading to the growth of a lot of plants and weeds which has now become fuel for potential wildfires. Summer months brings hot temperatures that can lead to low humidity. The combination of low humidity and gusty winds creates perfect conditions for wildfires, hence the red-flag weather conditions.

Wildfires can create fine particle pollution also called particulate matter or PM. Particles come in a wide range of sizes. Particles less than or equal to 10 micrometers in diameter are so small that they can get into the lungs, potentially causing serious health problems (airnow.gov)

Health effects linked to PM exposure include:

Increased risk of premature death, especially from cardiovascular causes
Heart attacks and strokes
Respiratory effects in children (such as reduced lung development and development of chronic respiratory disease, such as asthma)
Increased hospital admissions and emergency department visits for respiratory effects, such as asthma attacks
Increase respiratory symptoms, such as coughing, wheezing and shortens of breath
Reduced lung function, especially in children and people with lung diseases

Ways to help:

Wildfire prevention begins with understanding and respecting fire and various fire fuels.
Use caution around dry grass and brush.
On increased fire danger days, avoid activities that could spark a fire.

Stow trailer chains properly.
Grilling safety – keep your grill clean and prevent grease from building up on racks and trays.
Fireworks safety – never try to relight used or defective fireworks.
Fire Pit safety – keep fire pits at least 10ft away from all structures and flammable materials, have on hand a shovel to put out fire if need be, and monitor the fire after it has been extinguished to prevent flare-ups.

For more information on air quality and the Clean Air Act, please contact Pyramid Lake Natural Resources Department at 775-574-0101 ext.18

Wherever you live... Natural gas is your neighbor.

Natural gas lines can be buried anywhere, even in areas that don't use natural gas, like all-electric or propane neighborhoods. So it's important that EVERYONE knows how to recognize and respond to a natural gas leak, wherever they are.

A leak may be present if you:
SMELL: An odor similar to rotten eggs, even if it's faint or momentary.
HEAR: A hissing or roaring coming from the ground or above-ground piping.
SEE: Dirt or water blowing into the air, unexplained dead or dying grass or vegetation, or standing water continuously bubbling.

If you suspect a leak:

- Leave the area immediately.
- From a safe place, call **911** and Southwest Gas at **1-877-860-6020**, day or night, **whether you're a customer or not.** A Southwest Gas representative will be there as soon as possible.
- Don't smoke or use matches or lighters.
- Don't turn on or off electrical switches, thermostats, or appliance controls; or do anything that could cause a spark.
- Don't start or stop an engine, or use automated doors.

SOUTHWEST GAS

For more information about natural gas safety, visit swgas.com/safety or call 1-877-860-6020.



Our Little Warriors

Busy, busy, busy bees at Little Warriors Daycare

Restoring our Little Warriors Learning Center

The 3 R's at Little Warriors Learning Center

Summer is a great time for us at the LWLC. We get to spend more time with more children when school is out for the summer. Don't worry we keep their days filled with activities.

The staff has made it a priority to help school-age children bridge that summer break learning gap.

Many students can experience as much as two months of lost learning in Math and Reading during the summer. To better support our children we devote several hours each day to practicing academic skills and learning new ones as well. School-age children are required to spend a minimum of 30 minutes reading everyday as well listening to stories read by their Child Care Provider during group time. The children practice their math skills on paper and with manipulatives in their learning centers. Some children practice cursive writing while others are working on letter formations. Our

LWLCs serve children from 6 weeks to 12 years of age and can present a challenge for our providers to meet the scope of academic needs for individual children. But, our providers have risen to the challenge and are doing their research, collaborating and planning for the needs of the children.

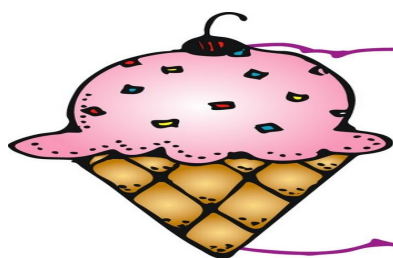
Last spring, we were working on the Parent Handbook and are happy to report that it is completed and was given to parents that attended our Parent Meeting. If you have not received your Parent Handbook, please ask your site supervisor for a copy. It is important that you have one for your reference about many of our policies such as sending a sick child home, emergency procedures, and payment arrangements.

We recently submitted our Child Care and Development Fund grant application which is a major source of funding for our LWLCs. The writing and submission of the grant was made in a timely manner which was made possible by many people in our Tribal Administration as well as input re-

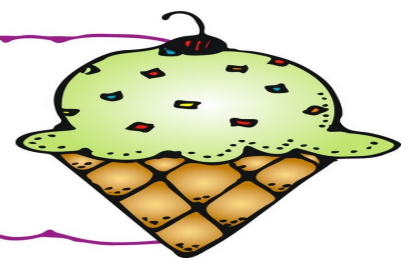
ceived during our public hearing. The CCDF grant outlines several of the procedures we use for providing access to our child care services, the use of the sliding fee scale and safety and health considerations.

Another program that we will be accessing is the USDA Food Program that will provide reimbursement assistance with our food costs. Thank you to all the parents that competed their food program applications. Our centers will now be able to hire a cook and provide breakfast, lunch and snack daily at no additional costs to parents.

Don't forget a great place to get up-to-date information is on our Facebook page, <https://www.facebook.com/LittleWarriorsDaycare>. You will find information of forms, upcoming events, and the monthly menu.



Here's the SCOOP!



Tribal Recreation News July 2016

We have completed the Family Activities schedule for June 2016. We had Cornhole Family Night at Wadsworth Community Building; Family Movie Night in collaboration with Realty at Big Bend Park; and S'Mores Night at the Blockhouse. All Family nights were well attended by many families in the area with the exception of the Cornhole Night. Thanks to those families who attended one or more events. We would like to continue the activities throughout the summer months. Please watch for a future activity schedule.

The TKY Sports Camp was well attended in the month of July as well. Students in grades K-6th attended. The TKY Sports Camp staff donated \$200 to the Recreation Program which will be used for field trips for the Summer Cultural Day Camp. A huge thank you to them!

Pyramid Lake Summer Cultural Day Camp is currently taking place for the month of July. The camp will run 4 days per week, from 8:45-12:00 daily. Transportation and lunch is provided. After the 1st week of camp, we have had 65 students attend. We have 3 more weeks of camp left. The upcoming week, will be dress making, Week 3 will be Paiute Language and the last week will be Traditional Games. So come on up! Other Tribal Programs also involved are: JOM Program, Diabetes Program, Environmental Interns, PL Health Clinic, Sumunumu Program, Domestic Violence Program, Artist in Residence, THPO Office, PLHS Transportation, Truckee Meadows Boys and Girls Club and PL Museum. We are looking for community members/adults to come up and share their knowledge. Please contact Janet Davis at

574-2409 for registration or if you are interested in helping! Funds for this project are from Native Youth Culture Fund. Thanks!

We will not be having the Adult Volleyball and Basketball open gym times available during the month of July due to the Summer Day Camp utilizing the gym. We will continue the adult schedule in August. Thank you for cooperation.

Any questions or concerns, please feel free to contact the Tribal Recreation Coordinator, Janet Davis at 574-2409.

Have a great Summer!



**Victim Services Program
New Hours – New Services
775-575-9444**

Regular office hours: Monday – Saturday: 8:00am – 4:30pm

New services and times:

Date	Time	Event
1st Wednesday of every month:	5:00 – 6:30pm	Craft Night
3rd Wednesday of every month:	4:30 – 6:30pm	Victim Services is open till 6:30pm for counseling (please call for an appointment)
1st & 3rd Saturday of every month:	10:00 – 11:00am	Victim of Crime Support Group (please call)
2nd & 4th Saturday of every month	3:00 – 4:00pm	Healing through Art (please call)
Every Saturday	1:00 – 2:00pm	Women’s Educational Support Group

Donations: All old cell phones have the capability of calling 911. We use old cell phones as part of the victim’s safety plan. If you have any old cell phones lying around and you would like to get rid of them, please

Victim Services Program

Craft Night

Sewing Lap Quilts for Elders

Group Facilitator: Jeanette Allen

When: July 7, 2016 (first Thursday of every month)

Where: Victim Services

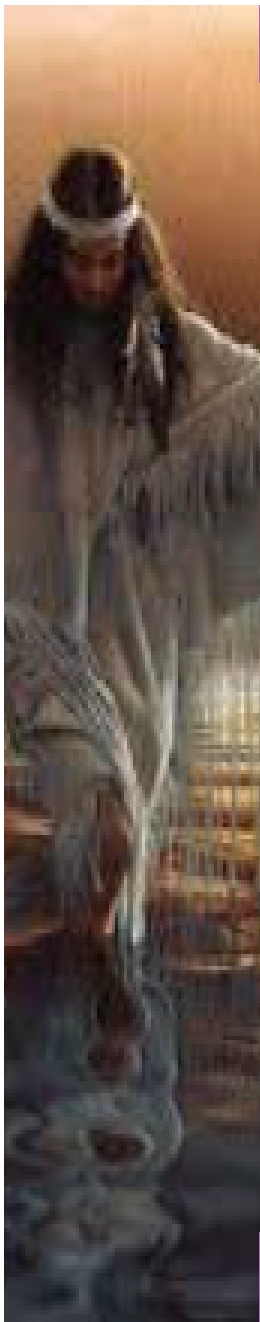
Time: 5:30 – 7:30pm

Please call 575-9444 for more info.

Supplies are limited. To make a lap quilt, please bring batting material, binding, 2 1/4 yds of neutral colored material and 2 yds of printed material. VSP has four sewing machines available.

This project was supported by Tribal Government Grant – 2013-TW-A-0033 US Department of Justice. The opinions, findings, conclusions, and recommendations expressed in this publication/program/evaluation are those of the author(s) and do not necessarily reflect the views of the Department of Justice, Office of Violence Against Women.

SEXUAL ASSAULT AWARENESS MONTH



“RESTORING LOVE, AND RESPECT & TRADITION IN HONOR OF OUR CHILDREN” EVENT

ON APRIL 27, 2016 THE PYRAMID LAKE VICTIM SERVICES PROGRAM HELD OUR ANNUAL APRIL AWARENESS EVENT. WE HAD OUR OPENING PRAYER HELD BY ONE OF OUR DEAR ELDERS, REYNELDA JAMES. OUR TRIBAL CHAIRMAN VINTON HAWLEY SHARED HIS OPENING REMARKS. WE HAD A “STORY OF COURAGE” BY DELLA JOHN WHICH HIT HOME WITH WHAT OUR ANCESTORS HAD TO DO IN THE INSTANCES OF SEXUAL VIOLENCE. VERY MOVING AND APPRECIATED HER PARTICIPATION. ALONG WITH THE SEXUAL ASSAULT AWARENESS BY THE VSP STAFF AND CRIME VICTIMS RIGHTS BY MARY DODD, VSP COORDINATOR. THERE WAS A VIDEO OF THE SONG “THE 11TH COMMANDMENT” WHICH WAS DEDICATED TO KEEPING OUR CHILDREN SAFE AND STANDING UP AGAINST ABUSE ON OUR CHILDREN. WE WERE PLEASED TO HAVE ITCN’S AMBER NEFF SPEAK ON CHILD ABUSE AND HOW WE CAN HELP. THE CHILDREN FROM NATCHEZ SCHOOL MADE FLOWERS AND WROTE POSITIVE AFFIRMATIONS ON THEM SUCH AS “ I AM BEAUTIFUL” “ I AM ARTISTIC” “ I AM LOVED”. TODAY THE FLOWER GARDEN IS EXHIBITED AT NATCHEZ SCHOOL AS A REMINDER OF POSITIVE AFFIRMATIONS. CASSANDRA DARROUGH SANG A BEAUTIFUL HONOR SONG FOR THE CHILDREN. WE THANK ALL THE ENTITIES AND PEOPLE WHO CONTRIBUTED TO THE DINNER AND PRIZES IN OUR RAFFLE. AND A BIG THANK YOU TO MARY DODD, FOR BUILDING UP THE PROGRAM FOR OUR COMMUNITY.

Letters to the Editor

The Pyramid Lake Paiute Tribal Newspaper welcomes your "Letters to the Editor."

- ♦ Letters must be 200 words or less. Letters are subject to editing for conformance to the 200 word limit, as well as for libel and taste.
- ♦ Letters must carry a full, legible and signed name of its author. The newspaper staff does not withhold names of letter authors. Pseudonyms are not allowed.
- ♦ Each author is allowed one published letter per newspaper issue.
- ♦ To be published, all letters must have a permanent address and/or a daytime telephone number for verification. **This information will not be published.**
- ♦ Letters addressed to specific parties other than the Pyramid Lake Paiute Tribal newspaper, to readers, letters from other publications, form letters that do not contain original writing content by the signatory or personal complaints outside the public domain are not published.
- ♦ Letters are published in the order which they are received. Promptness of publication depends on the volume of letters received and space availability.

MAIL LETTERS TO:

**LETTER TO THE EDITOR
PYRAMID LAKE PAIUTE TRIBE
P O Box 256 Nixon, NV 89424**

2016 Newspaper Submittal for Paper **4th Quarter DEADLINE: September 30—12:00 pm**
Please complete **this form** and submit with your article.

BE SURE TO:

- ♦ Include your name, phone # and address.
- ♦ Personals may submit a hard copy of article. Hand written Personals ONLY must be printed legibly.
- ♦ **Mailed articles must be saved on CD** in Publisher or Word format. Please **DO NOT** send in .pdf format.
- ♦ **Articles can be submitted via e-mail to tribalnews@plpt.nsn.us**. Make sure contact info is available for any problems.
- ♦ Pictures should be submitted in black & white. (Dark backgrounds do not scan well).
- ♦ Digital pictures must be taken with a high resolution for a good quality picture in a .jpg format
- ♦ **REMEMBER:** Pictures represent the quality of the picture submitted.

DATE: _____ NEWSPAPER MONTH: _____
 NAME: _____
 PHONE: _____ DEPARTMENT: _____
 TITLE OF ARTICLE: _____
 ITEMS TO BE RETURNED: YES or NO
 IF YES, ADDRESS: _____

ADVERTISING RATES

Advertising space will be provided to any business, organization or individual at the following rates:

\$100/full page \$75/half page \$50/quarter page \$25/eighth page \$10/business card

All advertisements must be camera ready and cannot be returned.

Each advertisement must be paid in full by the deadline date for publishing.

CONTACT: PYRAMID LAKE PAIUTE TRIBE—NEWSPAPER ADVERTISEMENT P O Box 256, Nixon, NV 89424-0256 PH: (775) 574-1000;

FX: (775) 574-1008 or www.tribalnews@plpt.nsn.us

CHANGE OF ADDRESS - Name: _____
 Old Mailing: _____
 New Mailing: _____
 I confirm that this is my current address: Print Name: _____
 Signature: _____ Date: _____



Numuwaetu Nawahana
 Pyramid Lake Paiute Tribal Newspaper
 P.O. Box 256— 208 Capitol Hill Drive
 Nixon, NV 89424-0256
www.plpt.nsn.us

